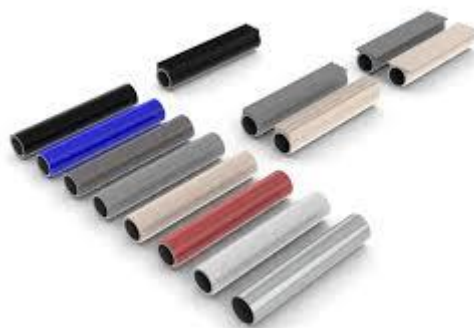


# ALUMINUM PROFILE SYSTEM



# ABS COATED / SS PIPES & JOINTS



# COMPANY INTRODUCTION



**RSK**

## **RSK INDIA PRIVATE LIMITED:-**

Since opening in beginning of 2018, M/s RSK India is proud to serve Indian Industrial market. RSK India committed to not only providing quality products and services, but going above and beyond to ensure our customers are completely satisfied. We welcome you to look through our site to see all we have to offer.

M/s RSK India is providing its niche solution to Indian market related to their “Material Management system” with the help of Extrusion aluminum profile structures & Modular ABS Coated / SS Pipes & joints systems.








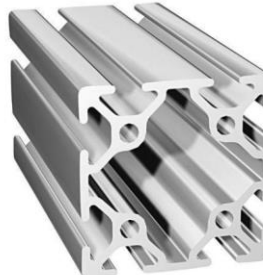
We have developed ourselves as manufacturers and service providers of production lines. We are specialised in designing & manufacturing of various type of working table, assembly lines & conveyor lines etc. we provide various solutions for lean production, material storage, logistics and distribution etc.

We can design & manufacture customized systems that are in accordance to the customer’s requirement. Our products are widely used in electronics, automobile, food processing, pharmaceutical, logistics & courier and toys and have very good reputation among our customers.

Yours trusted industrial supplier:-

**RSK INDIA PRIVATE LIMITED**

# INDUSTRIAL ALUMINUM PROFILE'S

 <p><b>AL Profile 20x20</b></p>	<p>Item :- Al Profile 20x20 mm            Material :- Aluminum (6063)            Temper :- T-6            Max Length :- 4 Meter            Weight :- 0.600 Kg/Mtr            Slot Size :- 8 mm</p>	 <p><b>AL Profile 30x30</b></p>	<p>Item :- Al Profile 30x30 mm            Material :- Aluminum (6063)            Temper :- T-6            Max Length :- 4 Meter            Weight :- 1.000 Kg/Mtr            Slot Size :- 8 mm</p>
 <p><b>AL Profile 40x40 M</b></p>	<p>Item :- Al Profile 40x40 mm            Material :- Aluminum (6063)            Temper :- T-6            Max Length :- 4 Meter            Weight :- 1.300 Kg/Mtr            Slot Size :- 8 mm</p>	 <p><b>AL Profile 40x40 H</b></p>	<p>Item :- Al Profile 40x40 mm            Material :- Aluminum (6063)            Temper :- T-6            Max Length :- 4 Meter            Weight :- 2.000 Kg/Mtr            Slot Size :- 8 mm</p>
 <p><b>AL Profile 40x80 M</b></p>	<p>Item :- Al Profile 40x80 mm            Material :- Aluminum (6063)            Temper :- T-6            Max Length :- 4 Meter            Weight :- 2.200 Kg/Mtr            Slot Size :- 8 mm</p>	 <p><b>AL Profile 40x80 H</b></p>	<p>Item :- Al Profile 40x80 mm            Material :- Aluminum (6063)            Temper :- T-6            Max Length :- 4 Meter            Weight :- 3.200 Kg/Mtr            Slot Size :- 8 mm</p>
 <p><b>AL profile 80x80 M</b></p>	<p>Item :- Al Profile 80x80 mm            Material :- Aluminum (6063)            Temper :- T-6            Max Length :- 4 Meter            Weight :- 4.200 Kg/Mtr            Slot Size :- 8 mm</p>	 <p><b>AL profile 80x80 H</b></p>	<p>Item :- Al Profile 80x80 mm            Material :- Aluminum (6063)            Temper :- T-6            Max Length :- 4 Meter            Weight :- 5.200 Kg/Mtr            Slot Size :- 8 mm</p>

# ALUMINUM PROFILE ACCESSORIES

 <p><b>Hidden Joint</b></p>	<p>Item :- Hidden joint clip            Material :- Stainless Steel            Bolt Size :- M8 -20</p>	 <p><b>Angle Bracket</b></p>	<p>Item :- Angle Bracket            Material :- Aluminum            T Bolt Size :-M8-20 mm            Friction Nut :-M8</p>
 <p><b>T Nut for Profile</b></p>	<p>Item :- T Nut for profile            Material :- Stainless Steel            T Nut Size :- M5,6,7,8</p>	 <p><b>T Bolt &amp; Friction Nut</b></p>	<p>Item :- T Bolt for profile            Material :- Stainless Steel            T Bolt Size :- M8-20            Friction Nut :- M8</p>
 <p><b>Bidding/Cover profile</b></p>	<p>Item :- Cover Profile            Material :- PVC            Size :- For 8mm Slot</p>	 <p><b>END Cap for profile</b></p>	<p>Item :- END Cap            Material :- PVC            Size :- For all profile Sections</p>
 <p><b>Handle's</b></p>	<p>Item :- Handle            Material :- PVC            Size :- for profiles</p>	 <p><b>Hinges</b></p>	<p>Item :- Hinges            Material :- PVC            Size :- for profiles</p>
 <p><b>Leveling Foot's</b></p>	<p>Item :- Leveling Foot            Material :- PVC/Steel            Size :- M8,10,12,16</p>	 <p><b>Slider Hook</b></p>	<p>Item :- Slider Hook            Material :- PVC/Steel            Size :- Standard</p>

# ABS / SS PIPE AND JOINT'S

ABS Pipe, The GOBLINE PIPE is coated by ABS Resin on high tensile mild steel pipe, having excellent durability, chemical resistance, and impact resistance, solid and light.

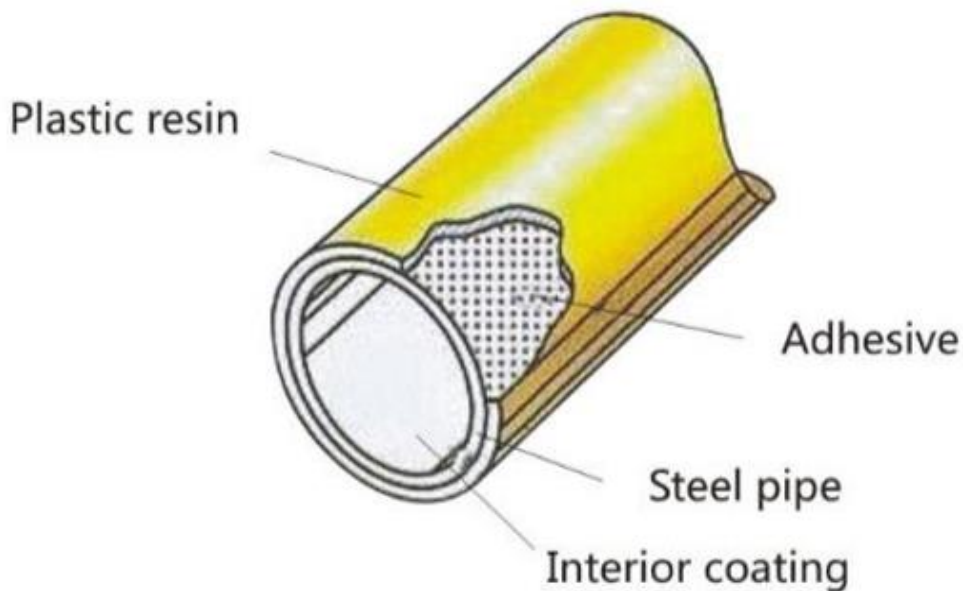
Stainless steel pipe is also high tensile stainless steel pipe which having standard diameter 28mm.

Pipe and joint system is known for high efficiency, high degree of variability, simple, and economic, environmental – friendly design concept. It is widely used in various industrial manufacturing fields.

It can make individual work tables and also the combination of many work tables to make production conveyor lines.

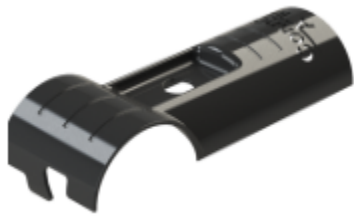
Workshop equipment's e.g. production line assemble station, input material tables, output material tables, testing tables and repair tables etc.

Material carts, traditional racks with multi-layer shelves can be made. It can also make advanced rack with FIFO system which are very light weight. These racks can also use skate –rails that make the flow of material very fast, make it efficient and cost-effective by reducing the manpower requirement.



<b>Type / Material</b>	<b>ABS Coated / SS pipe</b>
<b>Colour</b>	<b>ABS Coated pipe (Ivory,Blue,White, Grey) , SS Pipe standard</b>
<b>Outside Diameter</b>	<b>Standard Diameter 28mm</b>
<b>Thickness</b>	<b>0.7mm , 0.9mm , 1.2mm (As per customer specification)</b>
<b>Specification</b>	<b>ABS / SS pipe standard length 4000mm</b>

# ABS / SS PIPE ACCESSORIES



**R-1 , BUTT JOINT**



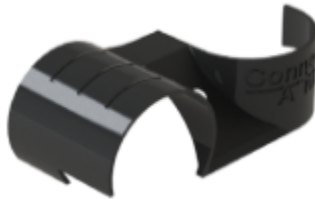
**R-2, 90 DEGREE OUTER**



**R-3, 90 DEGREE INNER**



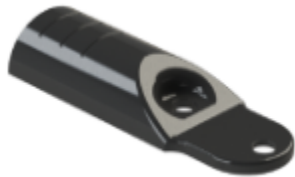
**R-4, FLAT**



**R-6, CROSSOVER**



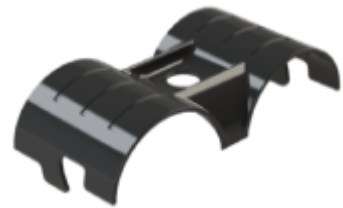
**R-7A, VARIABLE ANGLE**



**R-7B, VARIABLE ANGLE**



**R-7C, VARIABLE ANGLE**



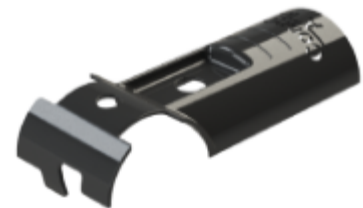
**R-8, PARALLEL**



**R-9, DOUBLE BUTT**



**R-90, ROUNDED CORNER**



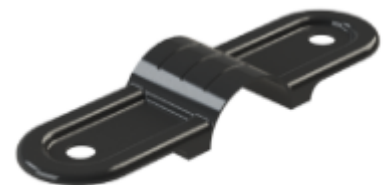
**R-12, SLIDED BUTT**



**R-13A, MULTI PURPOSE**



**R-13B, MULTI PURPOSE**



**R-15, DOUBLE VARIABLE**

# ABS / SS PIPE ACCESSORIES



**R-100, CASTOR MOUNT**



**R12-SLIDER**



**END CAP**



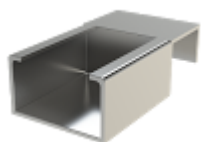
**RT-40, ROLLER TRACK**



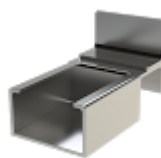
**RT-40, FLANGED ROLLER**



**RT-80, ROLLER TRACK**



**RT-40, NON STOPPER**



**RT-40, STOPPER**



**RT-80, NON STOPPER**



**RT-80, STOPPER**



**RT-40, SUPPORT BRACKET**



**PIPE INSERT**



**LEVELING FOOT**



**SWIVEL PLATE CASTOR**



**FIXED PLATE CASTOR**

## -: RSK INDIA:-

M/s RSK India is providing its niche solution to Indian market related to their “**Material Management system**” with the help of Extrusion aluminum profile structures & Modular ABS Coated / SS Pipes & joints systems. RSK India, is an Indian organization, which is providing aluminum profile section, working table & structures or also its innovative solution for the material management in industries by the help of ABS coated / SS pipes & joints system like FIFO racks, Chutes, trolley and Racks.

## -: ALUMINUM PROFILE SYSTEM/APPLICATION:-



-: FIXTURE RACK'S:-



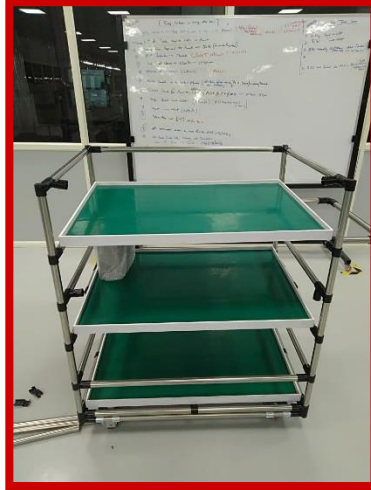
-: MACHINE GUARD/FENCING:-



# :- ALUMINUM PROFILE WORKING TABLES:-



# -: SS/ABS PIPES & JOINTS APPLICATION:-



-: WORKING TABLES :-

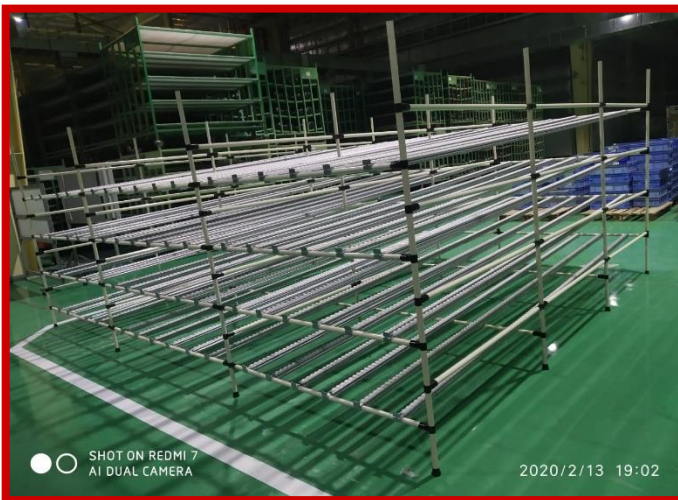


-: MOVEMENT TROLLEYS :-



-: FIFO RACKS AND CHUTES :-

# -: SS/ABS PIPES & JOINTS STORAGE RACKS :-



# CUSTOMISED SHEET METAL PRODUCTS



PEDESTAL



FILING CABINET



PERSONAL LOCKER



PEDESTAL



PEDESTAL



PERSONAL LOCKER



PERSONAL LOCKER



GLASS DOOR RACK

# CUSTOMISED SHEET METAL PRODUCTS



OFFICE SLIDING FILE RACK



OFFICE STANDARD FILE RACK



BOOK CASE



SLOTTED ANGLE RACKS



STANDARD TABLE-1



STANDARD TABLE-2



STANDARD TABLE-3



TOOL TROLLEY



MOVEMENT TROLLEY



COMPACTOR

## RSK INDIA PRIVATE LIMITED

<https://www.rskindia.co.in>

E-mail: [info@rskindia.co.in](mailto:info@rskindia.co.in)

**INDIA**

**HEAD OFFICE / FACTORY**

F-1, 6<sup>th</sup> Street, Kadipur Enclave, Kadipur  
Industrial Area, Sector-37C, Gurugram,  
Haryana (India) -122001

Tel. +91-8561941125 / +91-7300158600

**RSK**